



ELECTRICAL PANEL LOCKS



The Lock from Lock Experts

097



CAM LOCK

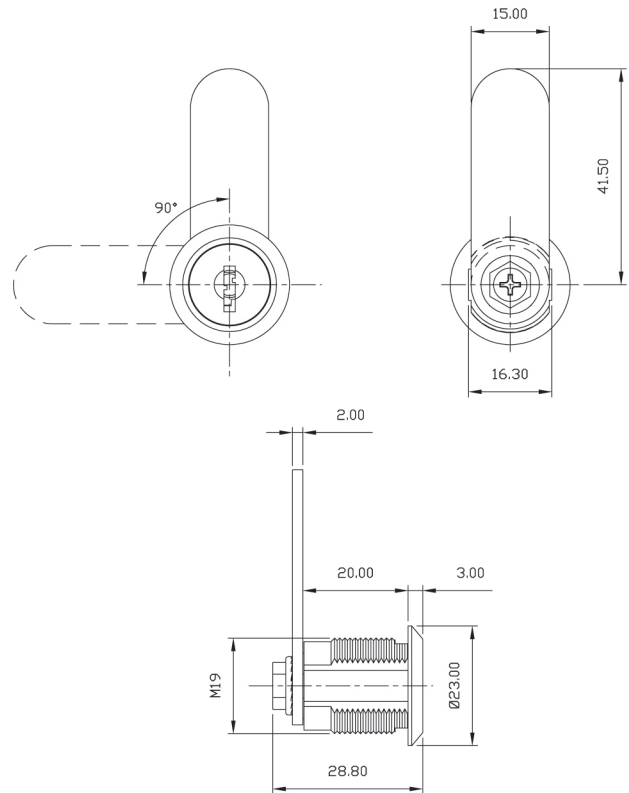
SPECIFICATIONS

- CAM LOCK 097 WITH CAM TYPE C02
- ZINC ALLOY DIE CAST
- NON-MASTER KEY SYTERM
- NON-REMOVABLE CORE SYSTEM

SET INCLUDES

- 1 LOCK HOUSING
- 1 CYLINDER CORE
- 2 KEYS
- 1 TYPE C02 CAM
- 1 HEXAGONAL NUT
- 1 SCREW

DIMENSIONS



ORDERING DETAILS

MODEL

097

EXAMPLES:

097
CAM LOCK 097 WITH CAM TYPE C02,
NON-MASTER KEY & NON REMOVABLE CORE SYSTEM, UNCAPPED KEY

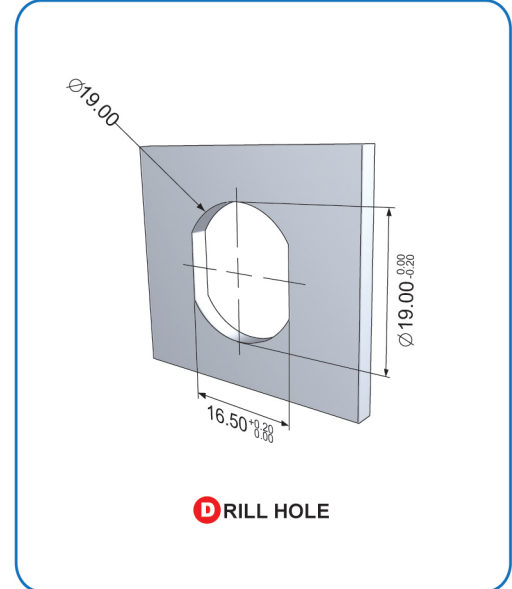


The Lock from Lock Experts

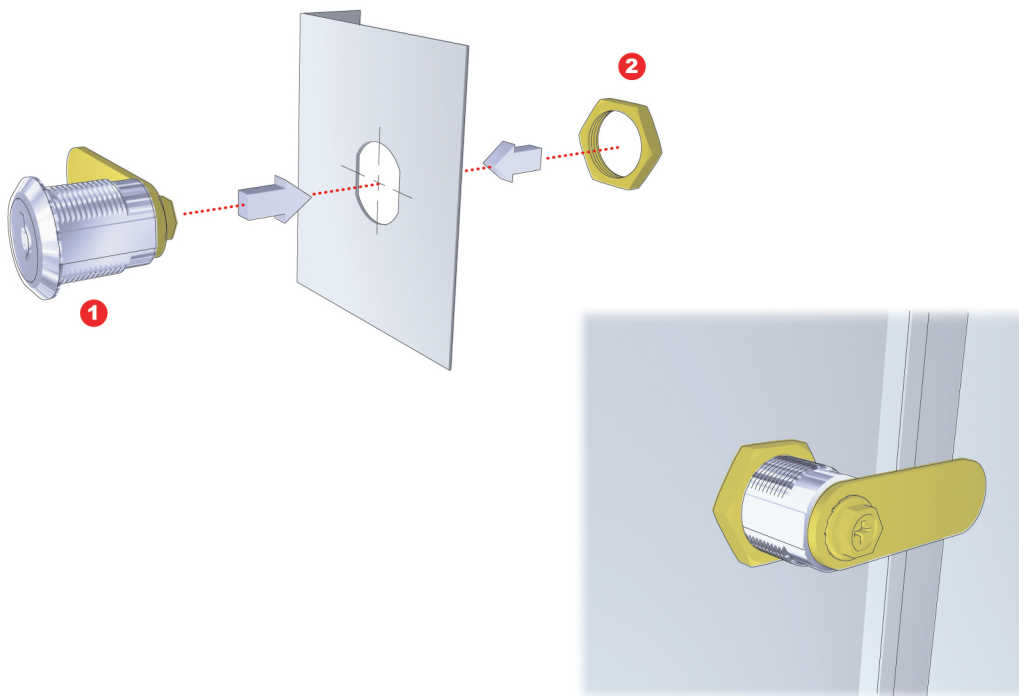
ELECTRICAL PANEL LOCKS



CAM LOCK



FIXING DETAILS





ELECTRICAL PANEL LOCKS



The Lock from Lock Experts

169



SPECIFICATIONS

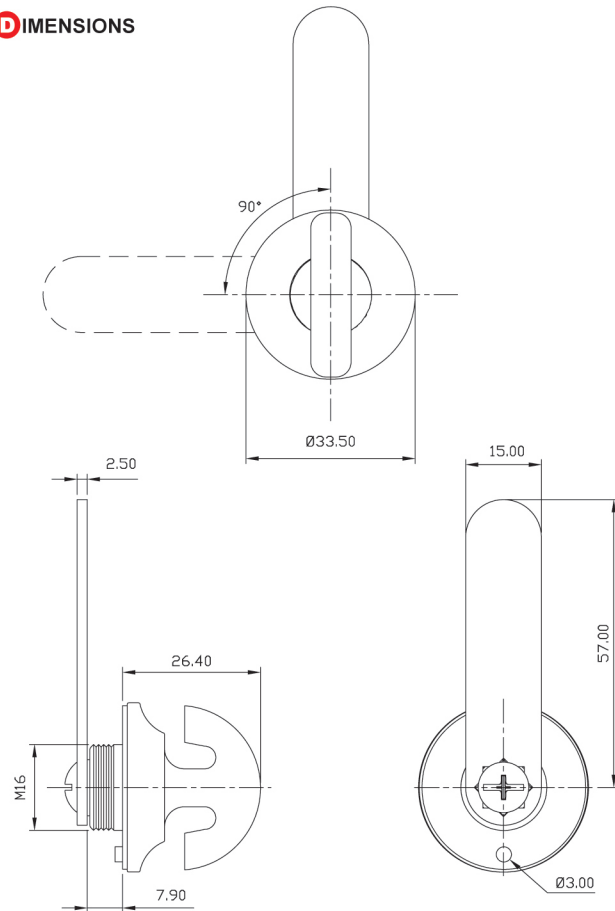
- WING HANDLE
- ZINC ALLOY DIE CAST
- NON-LOCKING

SET INCLUDES

- 1 WING HANDLE
- 1 CAM TYPE (G019 OR G020)
- 1 COVER
- 1 SCREW
- 1 HEXAGONAL NUT

WING HANDLE

DIMENSIONS



ORDERING DETAILS

MODEL

169

EXAMPLES:

169
WING HANDLE WITH CAM TYPE G019, NON-LOCKING

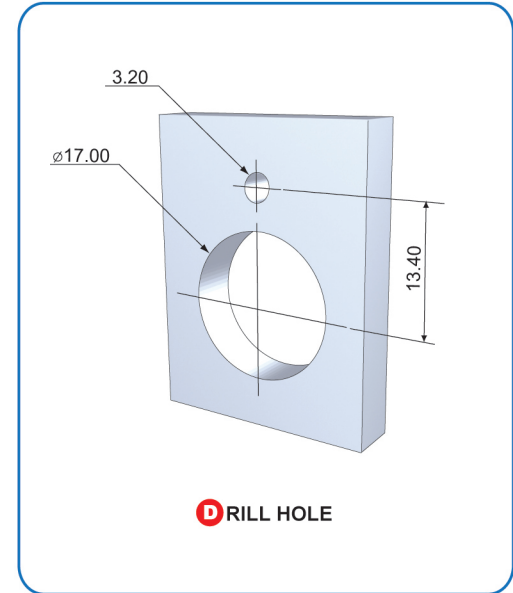


The Lock from Lock Experts

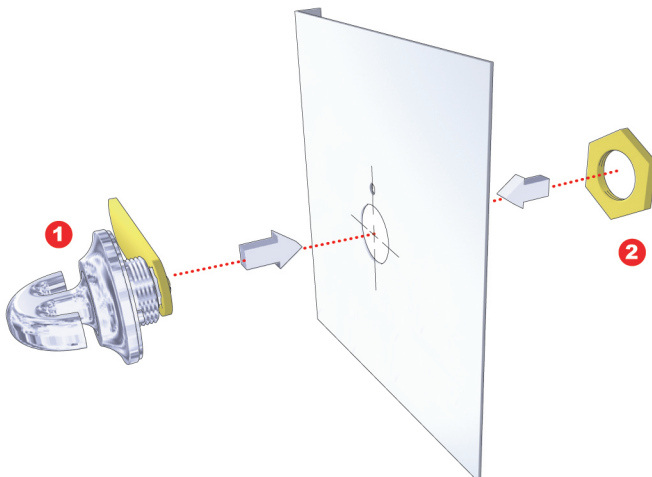
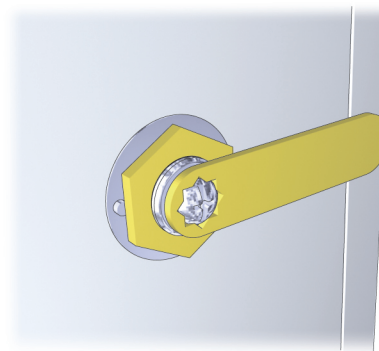
ELECTRICAL PANEL LOCKS



WING HANDLE



FIXING DETAILS





ELECTRICAL PANEL LOCKS



The Lock from Lock Experts

CONTROL BOX HINGE

170-03



170-04



SPECIFICATIONS

- CONTROL BOX HINGE (FOR DOOR THICKNESS OF 2mm OR LESS)
- ZINC ALLOY DIE CAST

SET INCLUDES

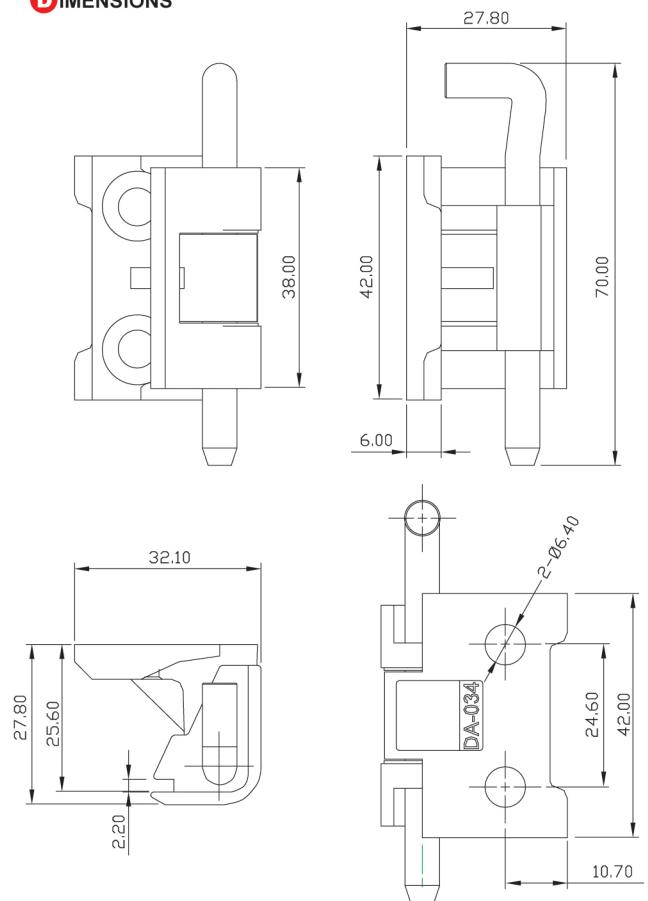
- 1 HINGE
- 1 PIN

ORDERING DETAILS

MODEL	FINISH
170	03 CHROME 04 BLACK

EXAMPLES:
170-03
CONTROL BOX HINGE
(FOR DOOR THICKNESS
OF 2mm OR LESS), CHROME FINISH

DIMENSIONS



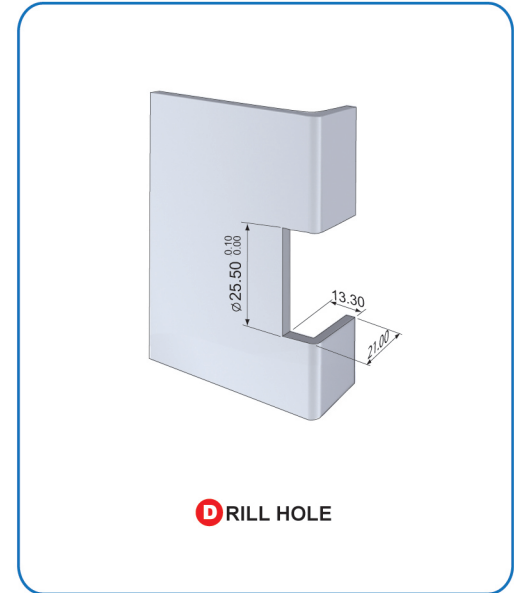
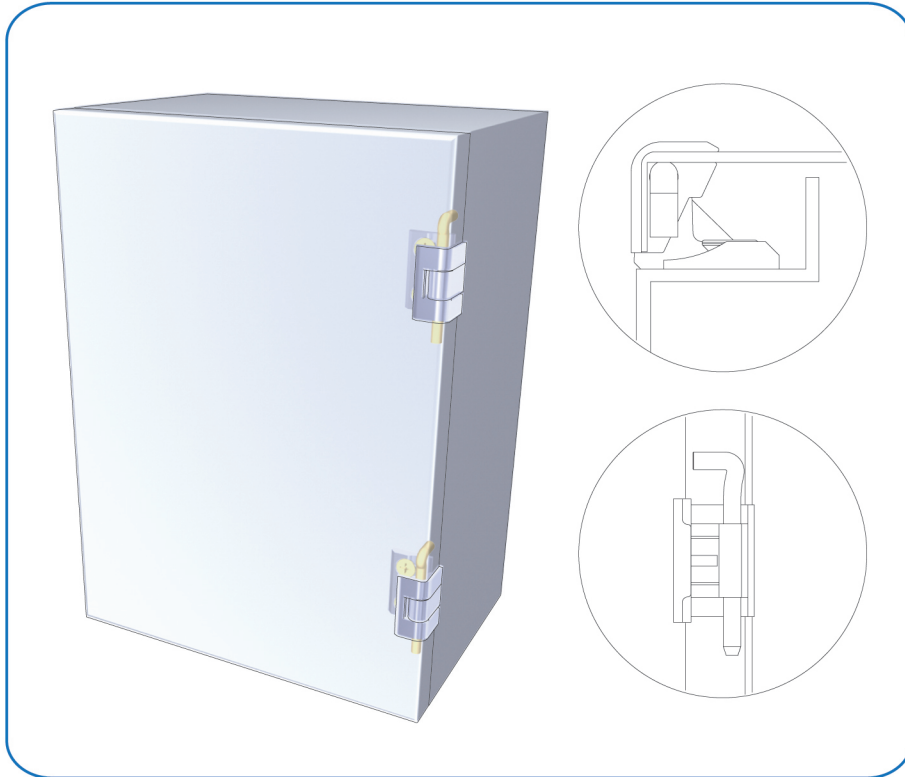


The Lock from Lock Experts

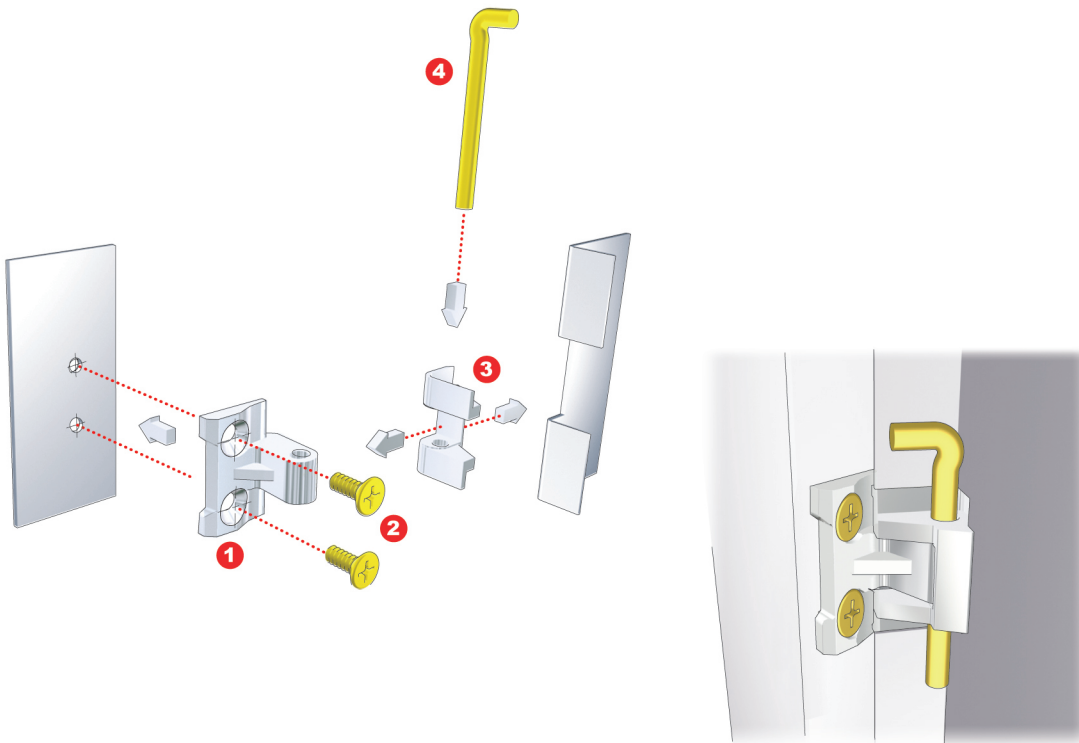
ELECTRICAL PANEL LOCKS



CONTROL BOX HINGE



FIXING DETAILS





ELECTRICAL PANEL LOCKS



The Lock from Lock Experts

CONTROL BOX HINGE

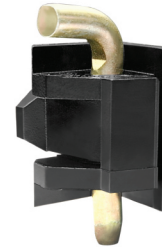
171-01



171-03



171-04



171-11



171-51



THE COLORS ON CATALOGUE ARE FOR GUIDANCE ONLY, ACTUAL PRODUCT COLORS MAY DIFFER.

SPECIFICATIONS

- CONTROL BOX HINGE (FOR DOOR THICKNESS OF 2mm OR LESS)
- ZINC ALLOY DIE CAST

SET INCLUDES

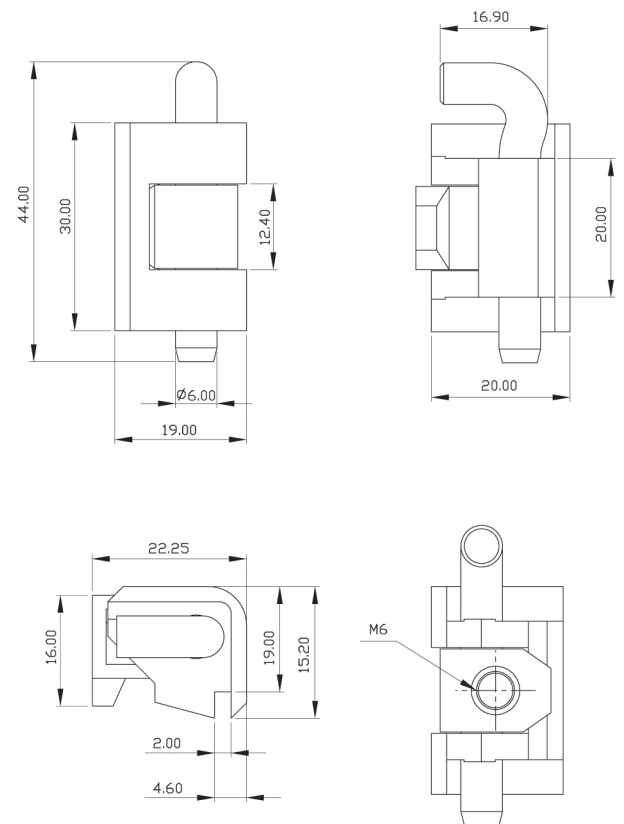
- 1 HINGE
- 1 PIN

ORDERING DETAILS

MODEL	FINISH
171	01 NICKEL 03 CHROME 04 BLACK 11 SILVER METALLIC 51 DULL ALUMINUM

EXAMPLES:
171-03
CONTROL BOX HINGE
(FOR DOOR THICKNESS
OF 2mm OR LESS), CHROME FINISH

DIMENSIONS



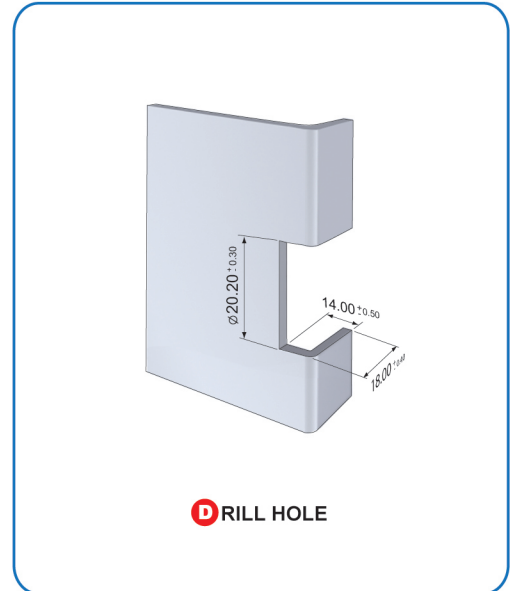
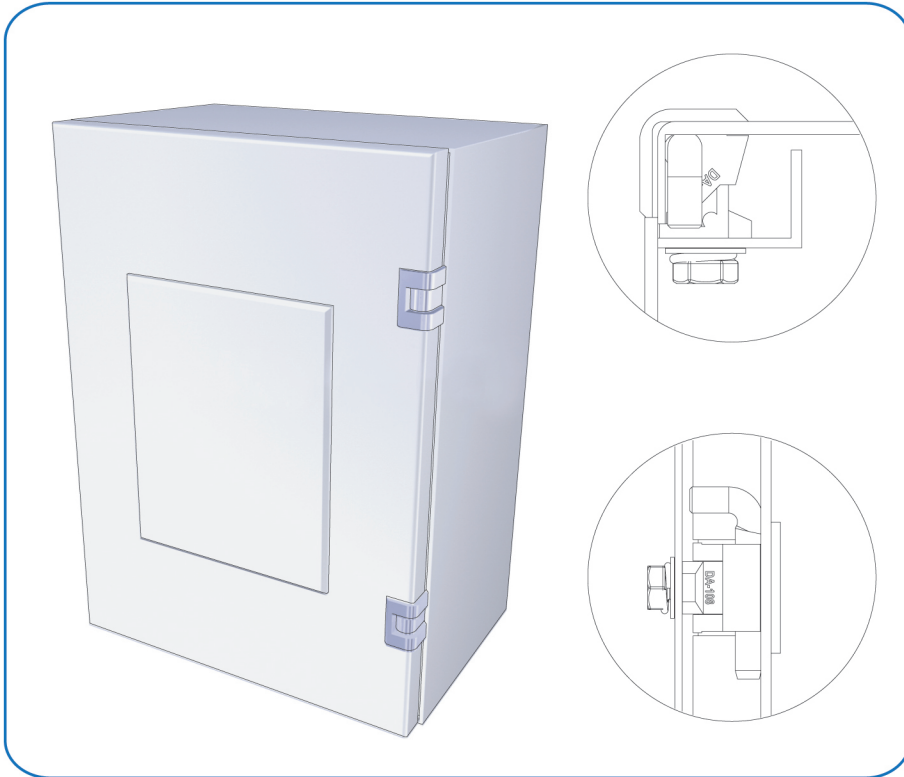


The Lock from Lock Experts

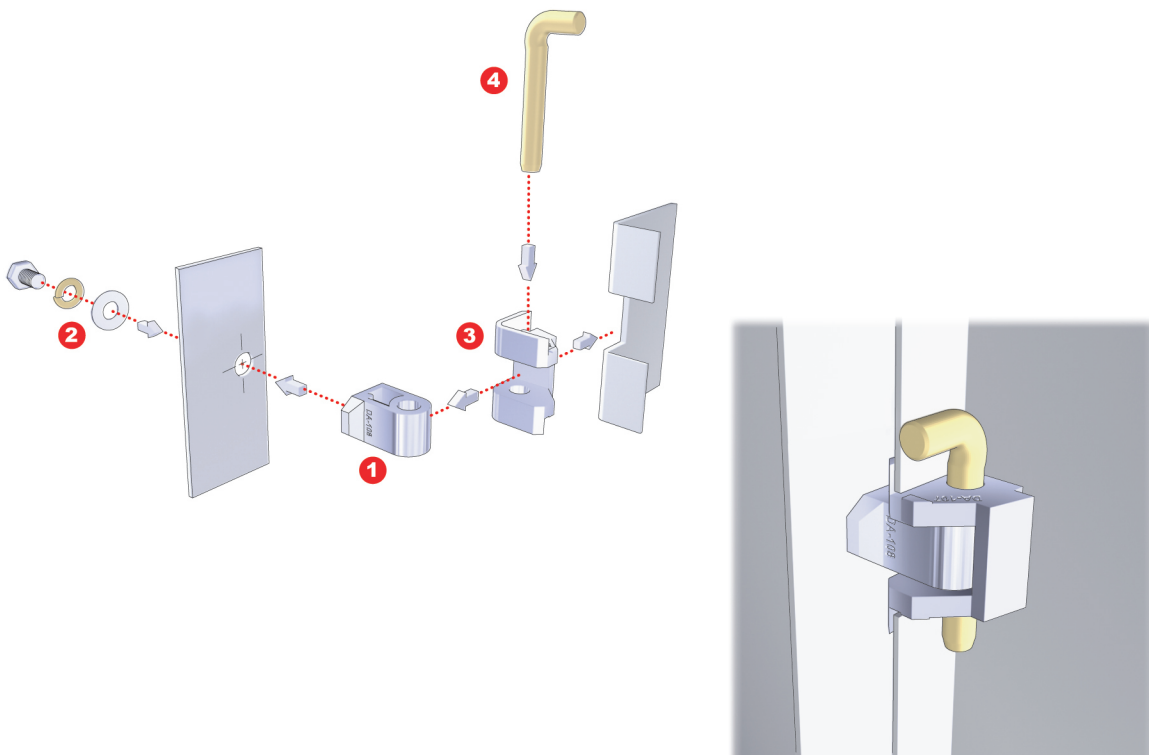
ELECTRICAL PANEL LOCKS



CONTROL BOX HINGE



FIXING DETAILS





ELECTRICAL PANEL LOCKS



The Lock from Lock Experts

L-HANDLE WITH WATERPROOF RUBBER PAD

C-172



SPECIFICATIONS

- L-HANDLE WITH WATERPROOF RUBBER PAD
- CHROME FINISH
- ZINC ALLOY DIE CAST
- NON-MASTER KEY SYTEM
- NON-REMOVABLE CORE SYSTEM

SET INCLUDES

- 1 LOCK HOUSING
- 1 CYLINDER CORE
- 2 KEYS
- 2 WATERPROOF RUBBER PADS
- 1 SHUTTER
- 1 TYPE G025 CAM
- 1 HEXAGONAL NUT
- 2 SCREWS

ORDERING DETAILS

MODEL

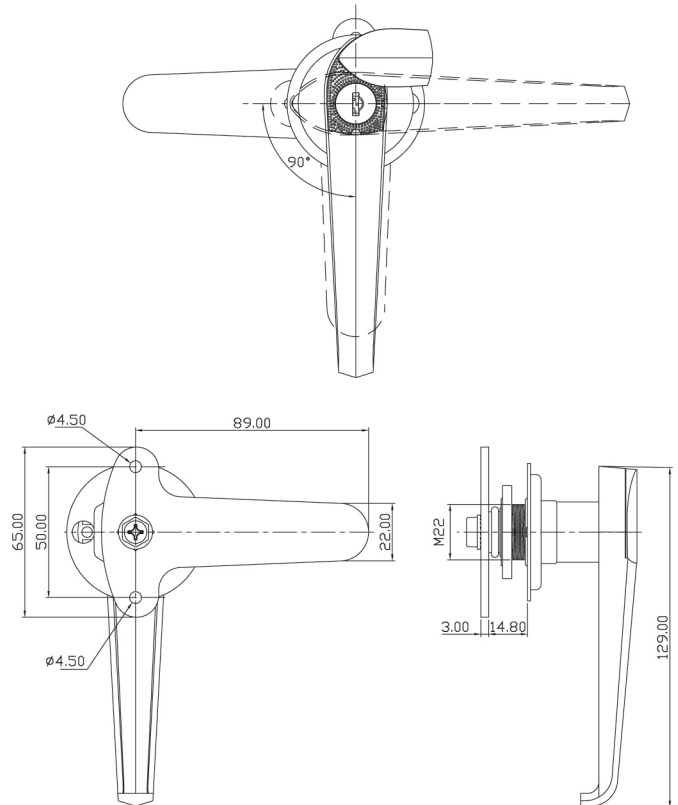
172

EXAMPLES:

172

L-HANDLE WITH WATERPROOF RUBBER PAD, CHROME FINISH, CAM TYPE G025, NON-MASTER KEY & NON-REMOVABLE CORE SYSTEM, UNCAPPED KEYS

DIMENSIONS



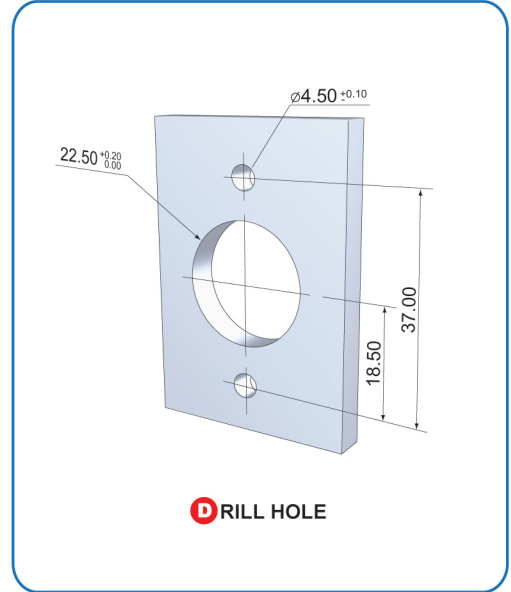
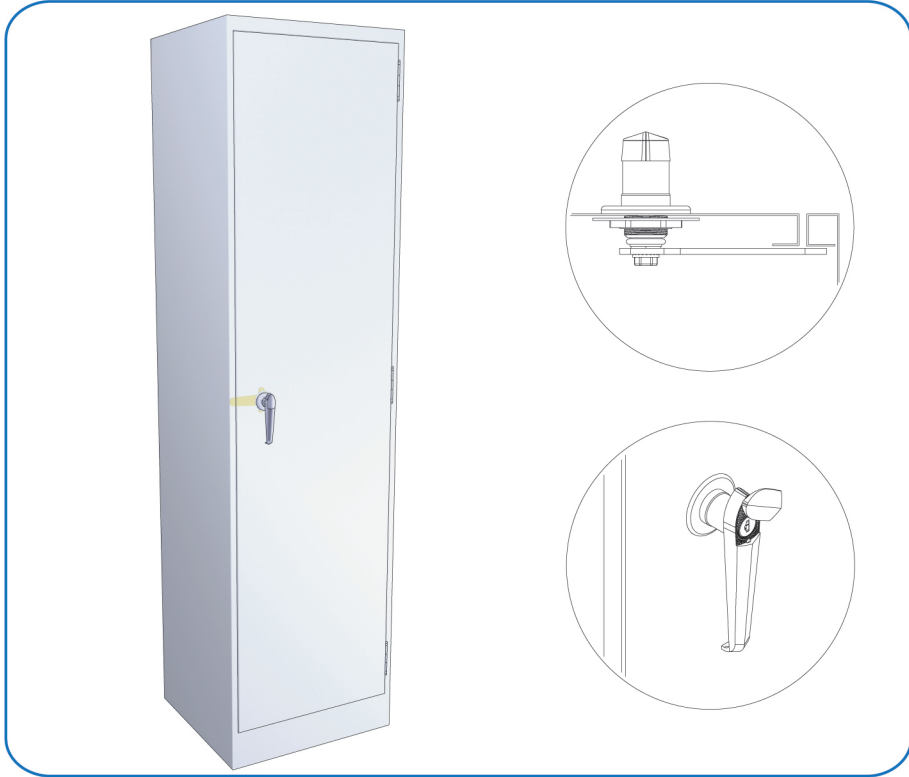


The Lock from Lock Experts

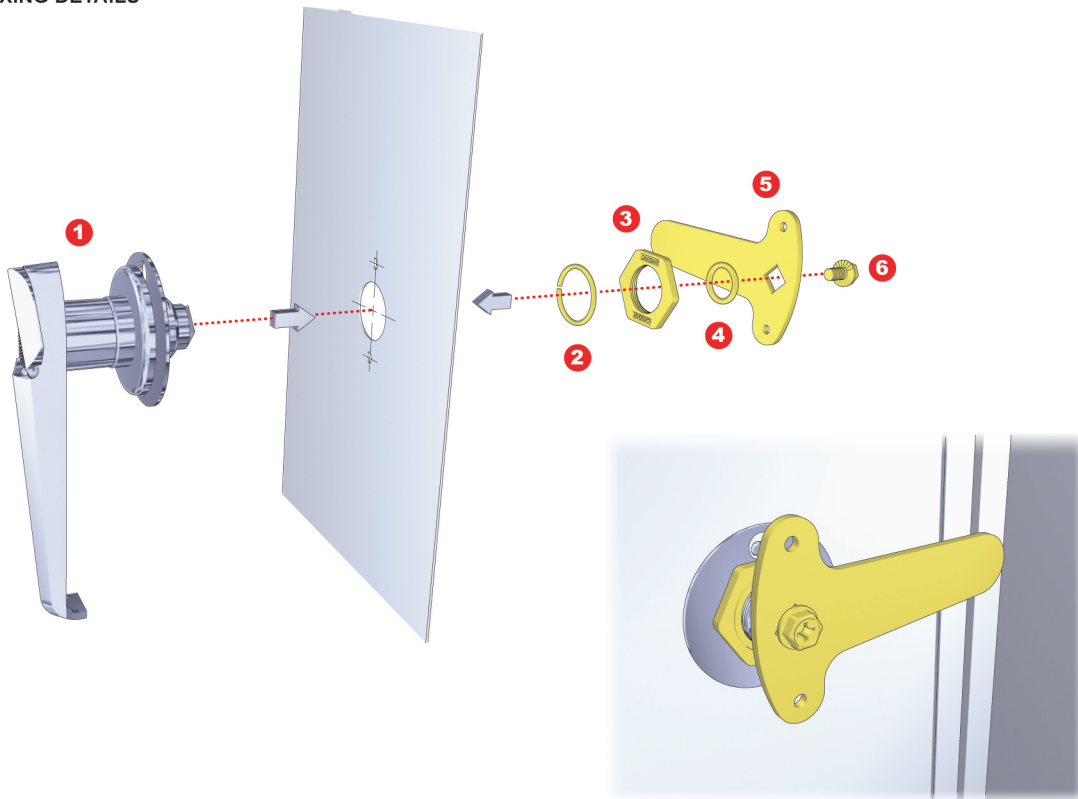
ELECTRICAL PANEL LOCKS



L-HANDLE WITH WATERPROOF RUBBER PAD



FIXING DETAILS





ELECTRICAL PANEL LOCKS



The Lock from Lock Experts

L-HANDLE

173



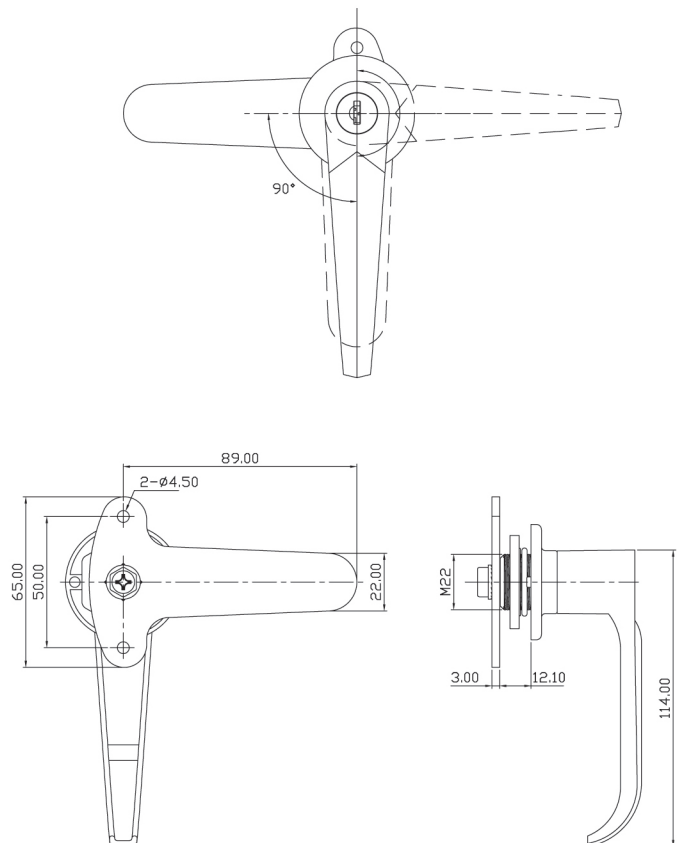
SPECIFICATIONS

- L-HANDLE WITH CAM TYPE G025
- CHROME FINISH
- ZINC ALLOY DIE CAST
- NON-MASTER KEY SYTEM
- NON-REMOVABLE CORE SYSTEM

SET INCLUDES

- 1 LOCK HOUSING
- 1 CYLINDER CORE
- 2 KEYS
- 1 TYPE G025 CAM
- 1 HEXAGONAL NUT
- 1 SCREW

DIMENSIONS



ORDERING DETAILS

MODEL

173

EXAMPLES:

173

L-HANDLE WITH CAM TYPE G025, CHROME FINISH,
NON-MASTER KEY & NON-REMOVABLE CORE SYSTEM, UNCAPPED KEYS



The Lock from Lock Experts

ELECTRICAL PANEL LOCKS



QUARTER-TURN LATCH (WATER RESISTANT)

174-03



174-04



SPECIFICATIONS

- QUARTER-TURN LATCH
- ZINC ALLOY DIE CAST
- NON-MASTER KEY SYSTEM
- NON-REMOVABLE CORE SYSTEM

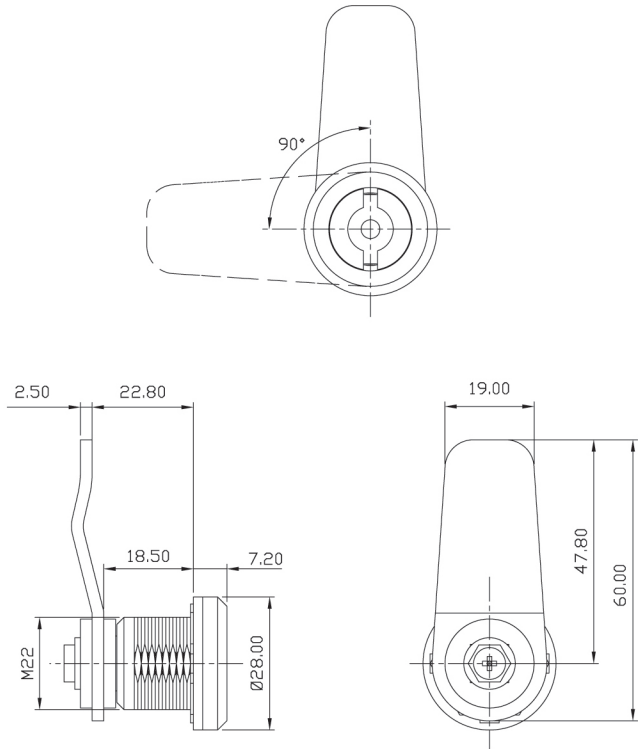
SET INCLUDES

- 1 HOUSING
- 1 CYLINDER CORE
- 1 TYPE G016 CAM
- 2 WASHERS
- 1 RUBBER PAD
- 1 RING
- 1 HEXAGONAL NUT
- 1 SCREW

ORDERING DETAILS

MODEL	FINISH	
174	03 CHROME 04 BLACK	EXAMPLES: 174-03 QUARTER-TURN LATCH, CHROME FINISH, NON-MASTER KEY & NON-REMOVABLE CORE SYSTEM

DIMENSIONS





ELECTRICAL PANEL LOCKS



The Lock from Lock Experts

QUARTER-TURN LATCH (NO WATER PROOF)

176-01



176-03



176-04



176-11



THE COLORS ON CATALOGUE ARE FOR GUIDANCE ONLY, ACTUAL PRODUCT COLORS MAY DIFFER.

SPECIFICATIONS

- QUARTER-TURN LATCH
- ZINC ALLOY DIE CAST
- NON-MASTER KEY SYSTEM
- NON-REMOVABLE CORE SYSTEM

SET INCLUDES

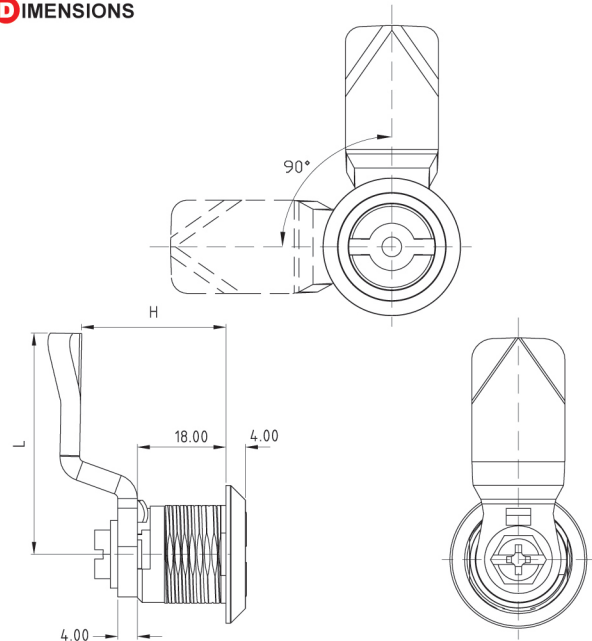
- 1 HOUSING
- 1 CYLINDER CORE
- 1 TYPE G016 CAM
- 2 WASHERS
- 1 RUBBER PAD
- 1 RING
- 1 HEXAGONAL NUT
- 1 SCREW

ORDERING DETAILS

MODEL	FINISH
176	01 NICKEL 03 CHROME 04 BLACK 11 SILVER METALLIC

EXAMPLES:
176-03
QUARTER-TURN LATCH,
CHROME FINISH,
NON-MASTER KEY &
NON-REMOVABLE CORE SYSTEM

DIMENSIONS



ITEM	L	H	PART NO.
1	45	29.4	G247
2	34	28.5	G252
3	39	17.0	G253
4	48	21.6	G254



The Lock from Lock Experts

ELECTRICAL PANEL LOCKS



QUARTER-TURN LATCH (NON-WATER RESISTANT)



THE COLORS ON CATALOGUE ARE FOR GUIDANCE ONLY, ACTUAL PRODUCT COLORS MAY DIFFER.

SPECIFICATIONS

- QUARTER-TURN LATCH
- ZINC ALLOY DIE CAST
- NON-MASTER KEY SYSTEM
- NON-REMOVABLE CORE SYSTEM

SET INCLUDES

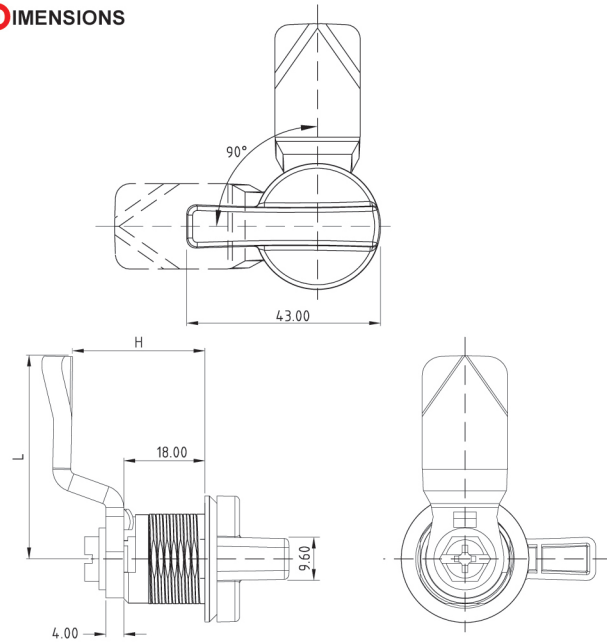
- 1 HOUSING
- 1 CYLINDER CORE
- 1 TYPE G016 CAM
- 2 WASHERS
- 1 RUBBER PAD
- 1 RING
- 1 HEXAGONAL NUT
- 1 SCREW

ORDERING DETAILS

MODEL	FINISH
177	01 NICKEL 03 CHROME 04 BLACK 11 SILVER METALLIC

EXAMPLES:
 177-03
 QUARTER-TURN LATCH,
 CHROME FINISH,
 NON-MASTER KEY &
 NON-REMOVABLE CORE SYSTEM

DIMENSIONS



ITEM	L	H	PART NO.
1	45	29.4	G247
2	34	28.5	G252
3	39	17.0	G253
4	48	21.6	G254

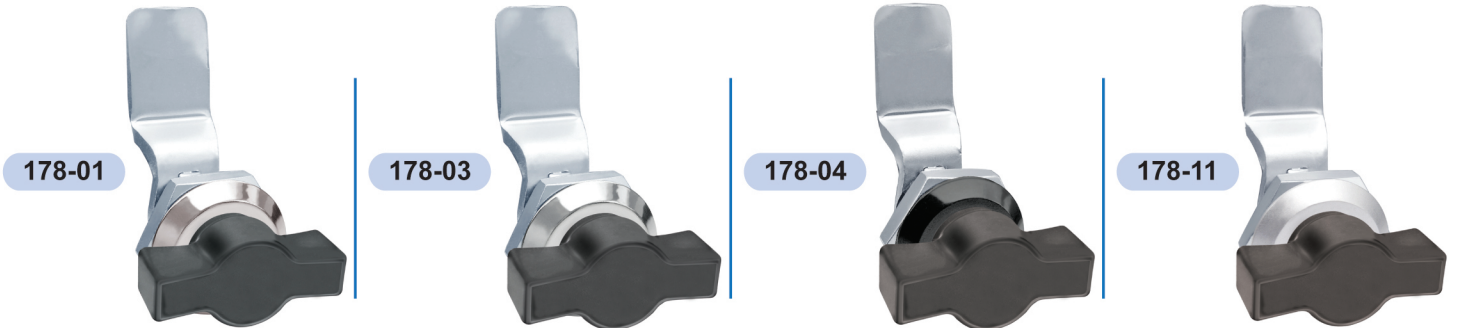


ELECTRICAL PANEL LOCKS



The Lock from Lock Experts

QUARTER-TURN LATCH (WATER RESISTANT)



THE COLORS ON CATALOGUE ARE FOR GUIDANCE ONLY, ACTUAL PRODUCT COLORS MAY DIFFER.

SPECIFICATIONS

- QUARTER-TURN LATCH
- ZINC ALLOY DIE CAST
- NON-MASTER KEY SYSTEM
- NON-REMOVABLE CORE SYSTEM

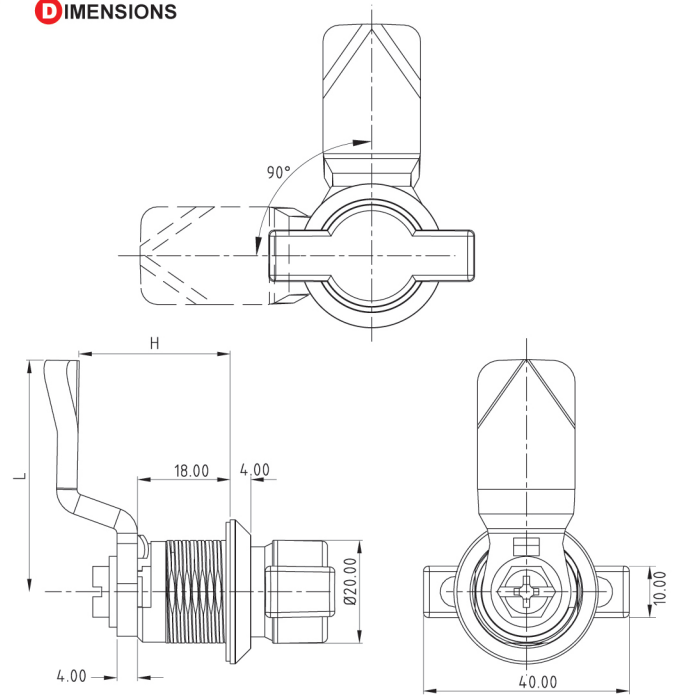
SET INCLUDES

- 1 HOUSING
- 1 CYLINDER CORE
- 1 TYPE G016 CAM
- 2 WASHERS
- 1 RUBBER PAD
- 1 RING
- 1 HEXAGONAL NUT
- 1 SCREW

ORDERING DETAILS

MODEL	FINISH	
178	01 NICKEL 03 CHROME 04 BLACK 11 SILVER METALLIC	<p>EXAMPLES: 178-01 QUARTER-TURN LATCH, NICKEL FINISH, NON-MASTER KEY & NON-REMOVABLE CORE SYSTEM</p>

DIMENSIONS



ITEM	L	H	PART NO.
1	45	29.4	G247
2	34	28.5	G252
3	39	17.0	G253
4	48	21.6	G254



The Lock from Lock Experts

ELECTRICAL PANEL LOCKS



QUARTER-TURN LATCH (NON- WATER RESISTANT)

179-01



179-03



179-04



179-11



SPECIFICATIONS

- QUARTER-TURN LATCH
- ZINC ALLOY DIE CAST
- NON-MASTER KEY SYSTEM
- NON-REMOVABLE CORE SYSTEM

SET INCLUDES

- 1 HOUSING
- 1 CYLINDER CORE
- 1 TYPE G016 CAM
- 2 WASHERS
- 1 RUBBER PAD
- 1 RING
- 1 HEXAGONAL NUT
- 1 SCREW

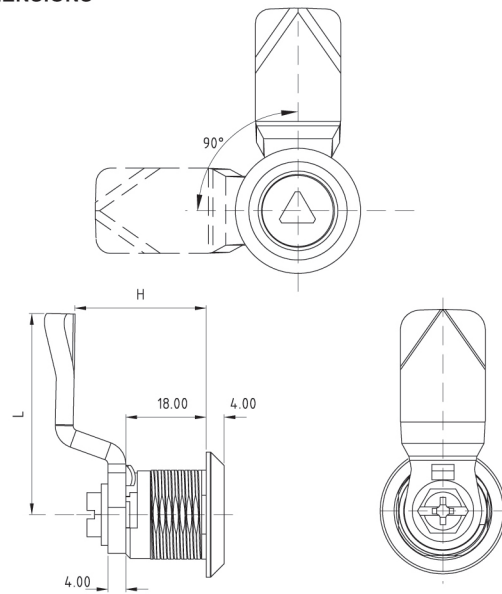
ORDERING DETAILS

MODEL	FINISH
179	01 NICKEL 03 CHROME 04 BLACK 11 SILVER METALLIC

EXAMPLES:
179-03
QUARTER-TURN LATCH,
CHROME FINISH,
NON-MASTER KEY &
NON-REMOVABLE CORE SYSTEM

THE COLORS ON CATALOGUE ARE FOR GUIDANCE ONLY, ACTUAL PRODUCT COLORS MAY DIFFER.

DIMENSIONS



ITEM	L	H	PART NO.
1	45	29.4	G247
2	34	28.5	G252
3	39	17.0	G253
4	48	21.6	G254



ELECTRICAL PANEL LOCKS



The Lock from Lock Experts

QUARTER-TURN LATCH KEY

K014-03

TO BE USED WITH 174,176



K015-03

TO BE USED WITH 174,176



K077-03

TO BE USED WITH 174,176



K078-03

TO BE USED WITH 179



K014-04

TO BE USED WITH 174,176



K015-04

TO BE USED WITH 174,176



K077-04

TO BE USED WITH 174,176

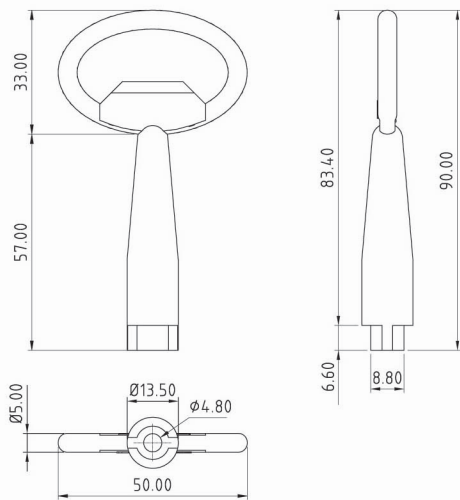


K078-04

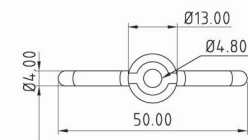
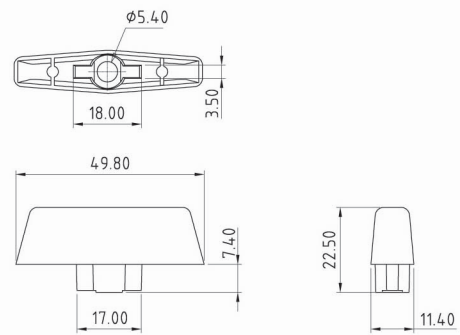
TO BE USED WITH 179



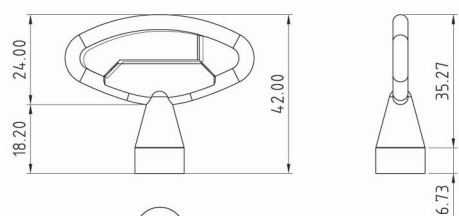
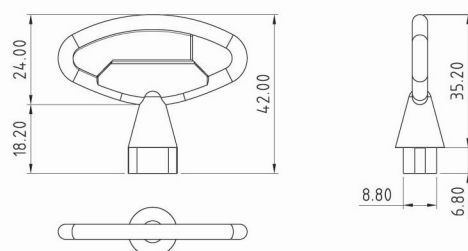
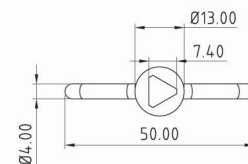
DIMENSIONS



K015



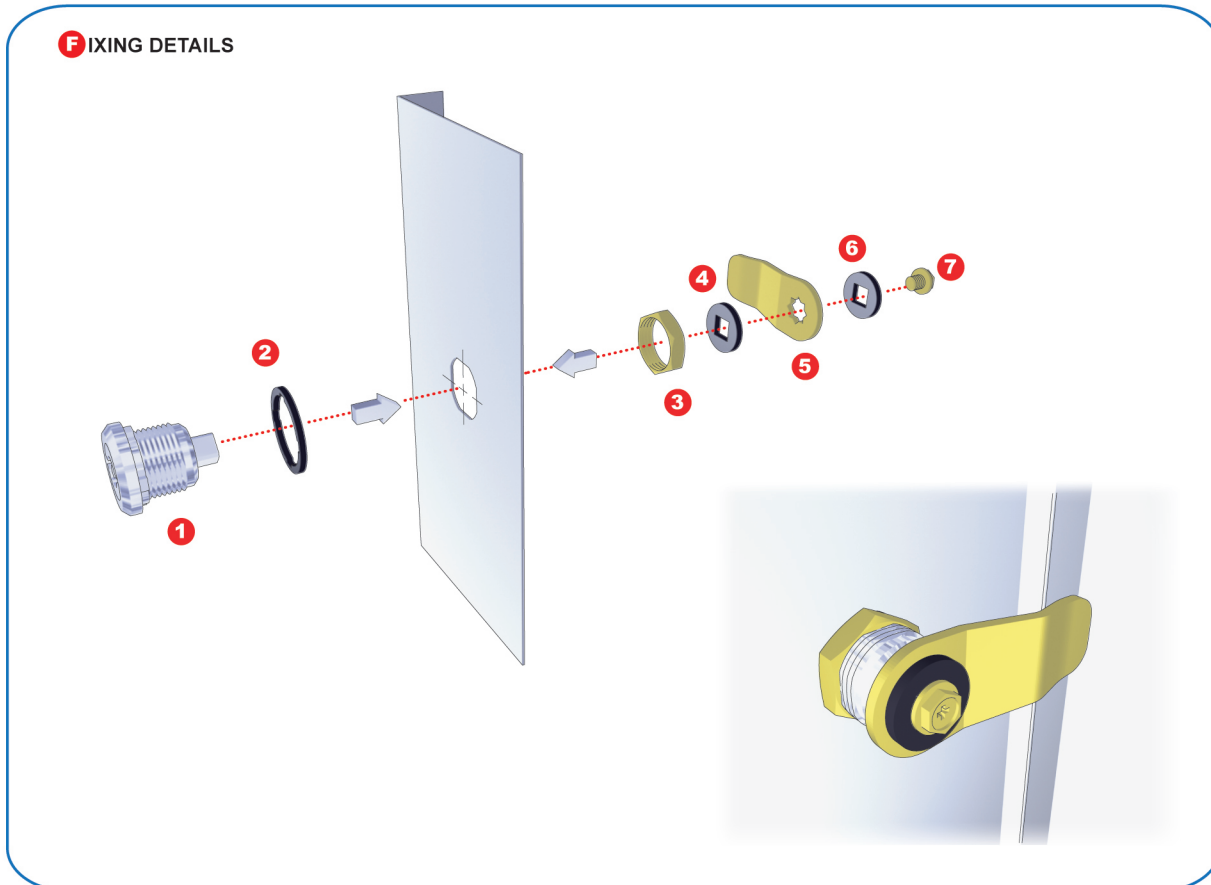
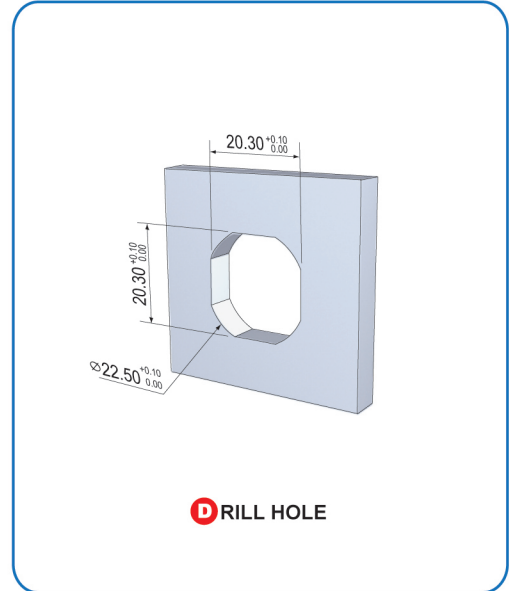
K078

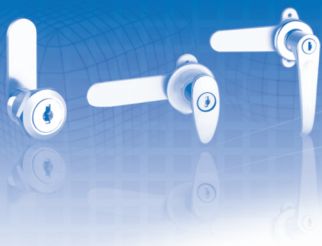




The Lock from Lock Experts

ELECTRICAL PANEL LOCKS





ELECTRICAL PANEL LOCKS



The Lock from Lock Experts

PUSH LATCH WITH KEY



175

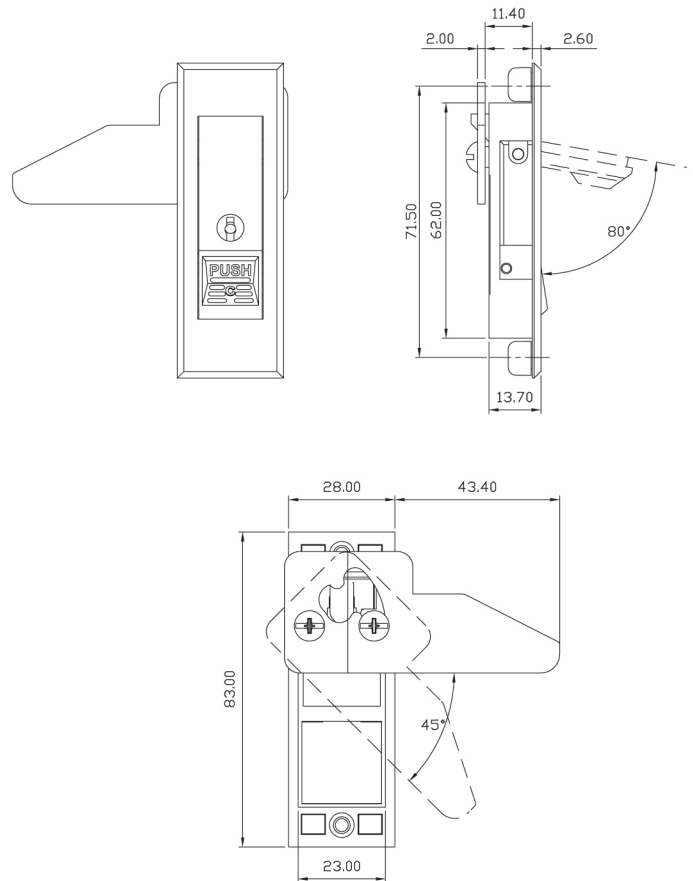
SPECIFICATIONS

- PUSH LATCH WITH KEY
- CHROME FINISH
- ZINC ALLOY DIE CAST
- CAM TYPE G105
- NON-MASTER KEY SYSTEM
- NON-REMOVABLE CORE SYSTEM

SET INCLUDES

- 1 LOCK HOUSING
- 2 KEYS
- 1 TYPE G021 CAM
- 4 SCREWS
- 2 COVERS

DIMENSIONS



ORDERING DETAILS

MODEL

175

EXAMPLES:

175
PUSH LATCH, CHROME FINISH, WITH CAM TYPE G021,
NON-MASTER KEY & NON-REMOVABLE CORE SYSTEM

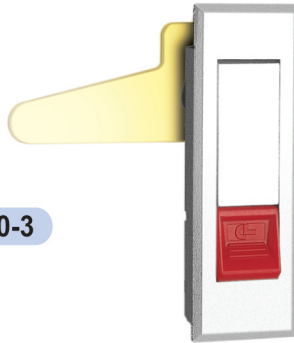


The Lock from Lock Experts

ELECTRICAL PANEL LOCKS



PUSH LATCH WITHOUT KEY



A-240-3

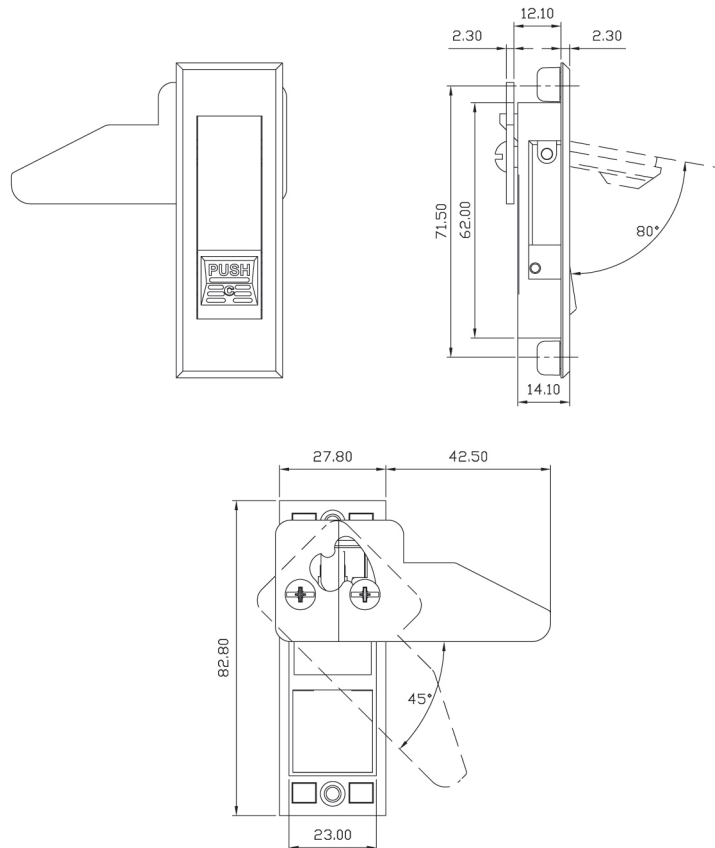
SPECIFICATIONS

- PUSH LATCH WITHOUT KEY
- CHROME FINISH
- ZINC ALLOY DIE CAST
- CAM TYPE G105
- NON-LOCKING

SET INCLUDES

- 1 LOCK HOUSING
- 1 TYPE G105 CAM
- 4 SCREWS

DIMENSIONS



ORDERING DETAILS

MODEL

A-240-3

EXAMPLES:

A-240-3
PUSH LATCH WITHOUT KEY, CHROME FINISH, WITH CAM TYPE G105



ELECTRICAL PANEL LOCKS



The Lock from Lock Experts

PUSH LATCH WITH KEY



A-240-3-1

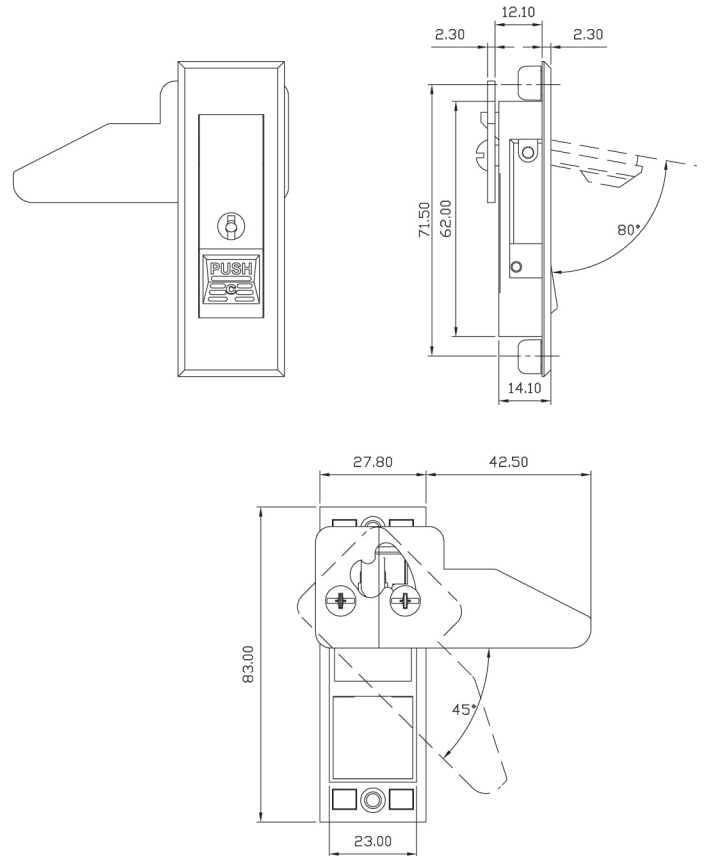
SPECIFICATIONS

- PUSH LATCH WITH KEY
- CHROME FINISH
- ZINC ALLOY DIE CAST
- CAM TYPE G105
- NON-MASTER KEY SYSTEM
- NON-REMOVABLE CORE SYSTEM

SET INCLUDES

- 1 LOCK HOUSING
- 2 KEYS
- 1 TYPE G105 CAM
- 4 SCREWS
- 2 COVERS

DIMENSIONS



ORDERING DETAILS

MODEL

A-240-3-1

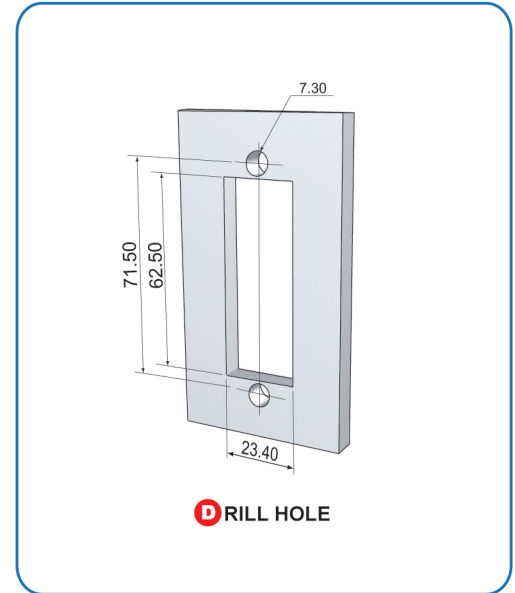
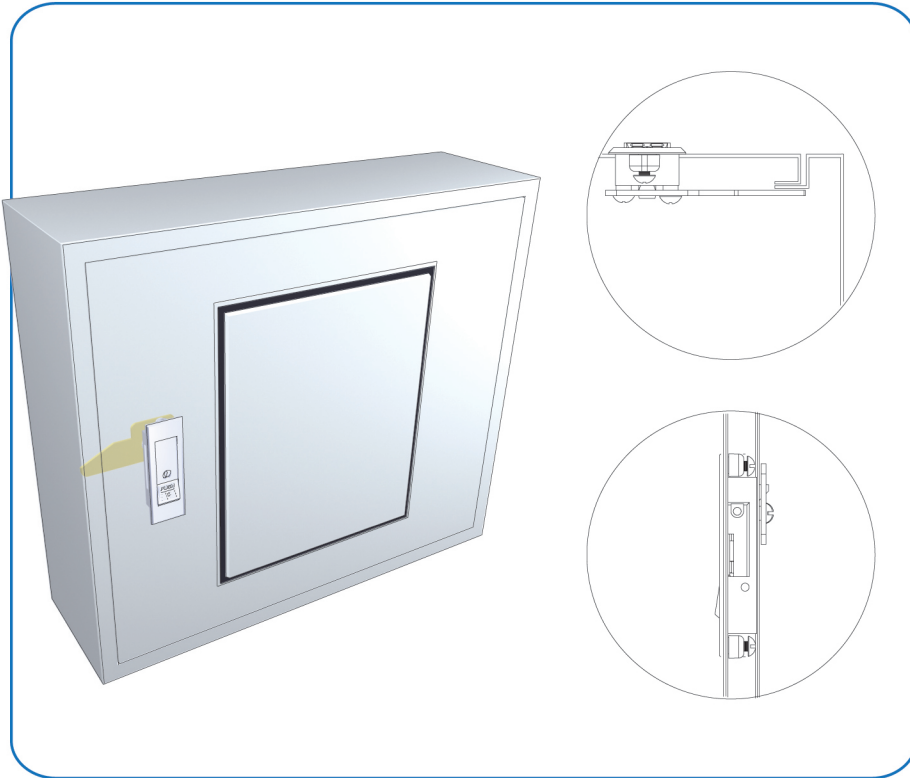
EXAMPLES:

A-240-3-1
PUSH LATCH WITH KEY, CHROME FINISH, WITH CAM TYPE G105,
NON-MASTER KEY & NON-REMOVABLE CORE SYSTEM

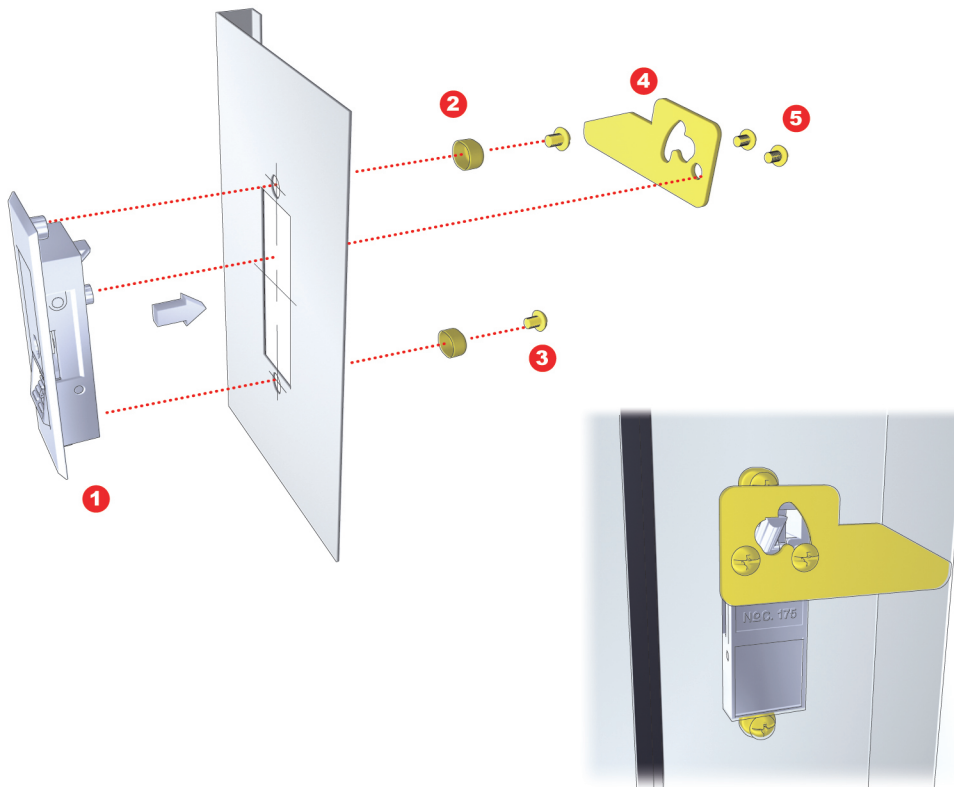


The Lock from Lock Experts

ELECTRICAL PANEL LOCKS



FIXING DETAILS





ELECTRICAL PANEL LOCKS



The Lock from Lock Experts

HANDLE LOCK



A-19

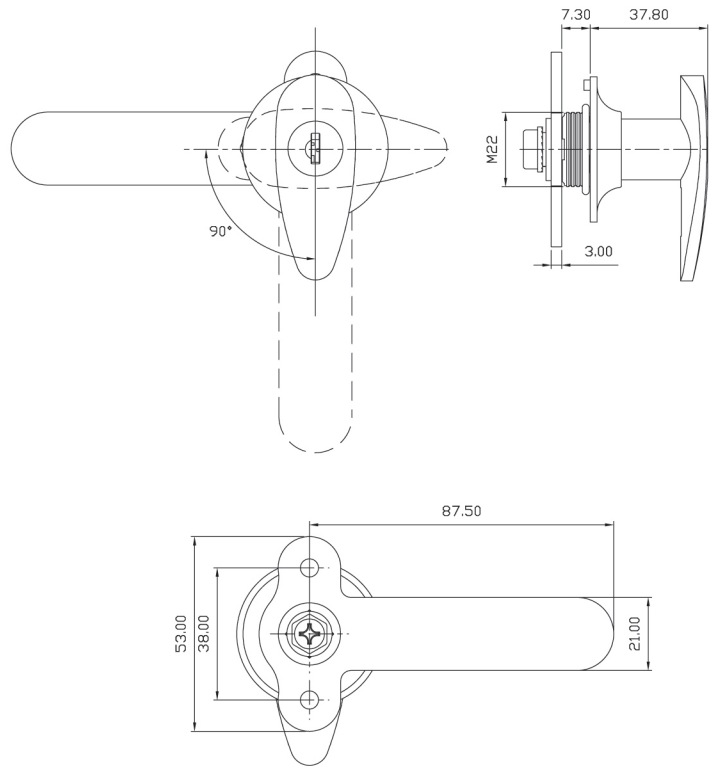
SPECIFICATIONS

- HANDLE LOCK
- CHROME FINISH
- ZINC ALLOY DIE CAST
- CAM TYPE G104
- NON-MASTER KEY SYSTEM
- NON-REMOVABLE CORE SYSTEM

SET INCLUDES

- 1 LOCK HOUSING
- 1 CYLINDER CORE
- 2 KEYS
- 1 TYPE G104 CAM
- 1 SUS 304 GRADE STAINLESS STEEL CLIP
- 1 SPCC GRADE STEEL SHUTTER
- 1 HEXAGONAL NUT
- 1 SCREW

DIMENSIONS



ORDERING DETAILS

MODEL

A-19

EXAMPLES:

A-19
HANDLE LOCK, CHROME FINISH, WITH CAM TYPE G104,
NON-MASTER KEY & NON-REMOVABLE CORE SYSTEM, UNCAPPED KEYS



The Lock from Lock Experts

ELECTRICAL PANEL LOCKS



HANDLE



B-19

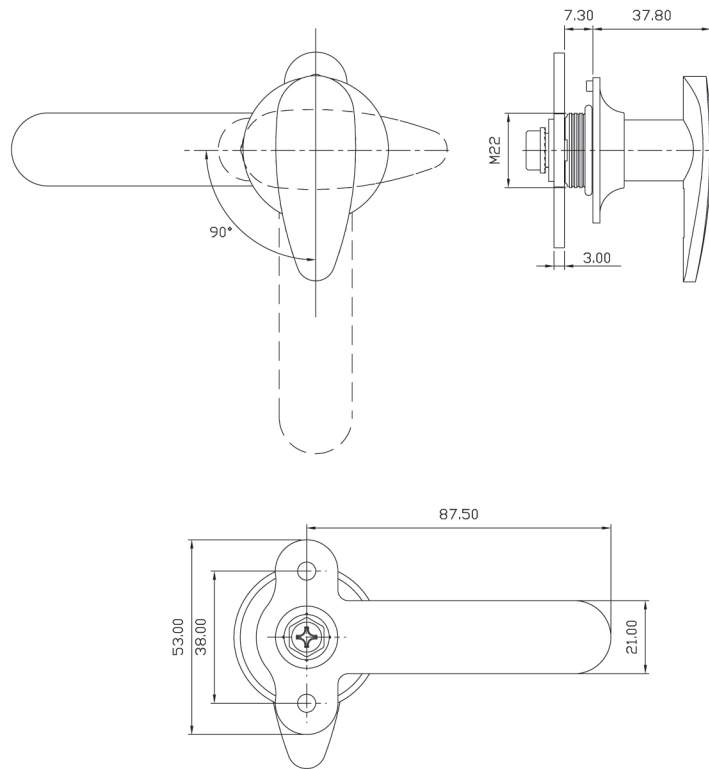
SPECIFICATIONS

- HANDLE
- CHROME FINISH
- WITH CAM TYPE G104
- NON-LOCKING

SET INCLUDES

- 1 HANDLE
- 1 TYPE G104 CAM
- 1 HEXAGONAL NUT
- 1 SCREW

DIMENSIONS



ORDERING DETAILS

MODEL

B-19

EXAMPLES:

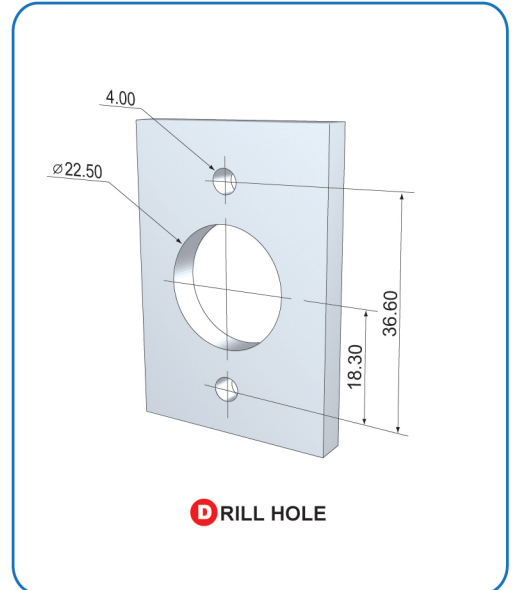
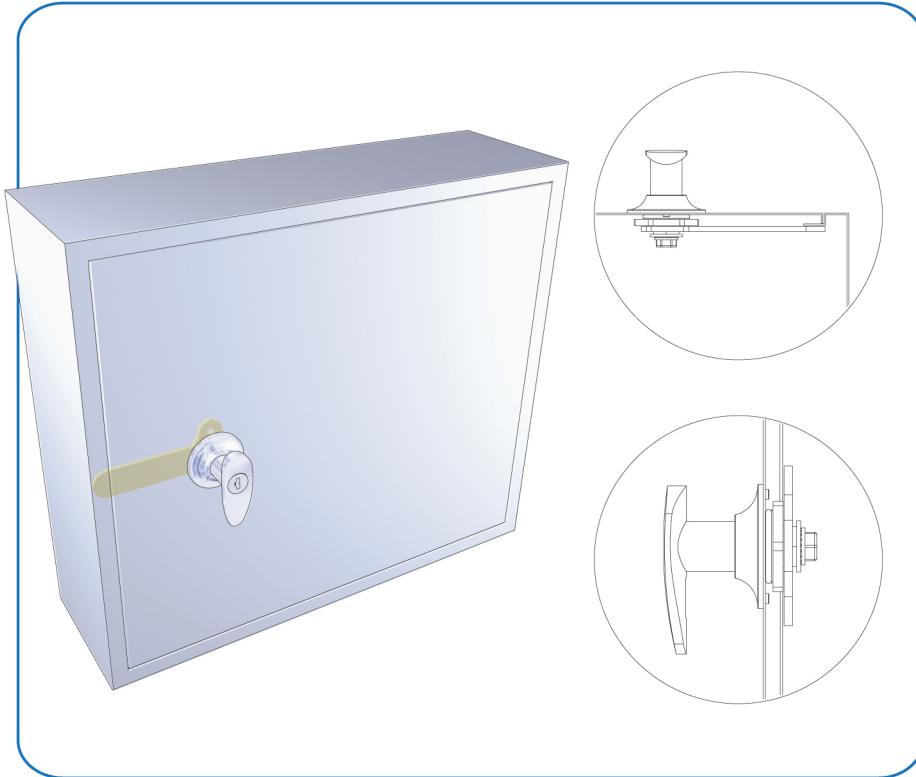
B-19
HANDLE, CHROME FINISH, WITH CAM TYPE G104



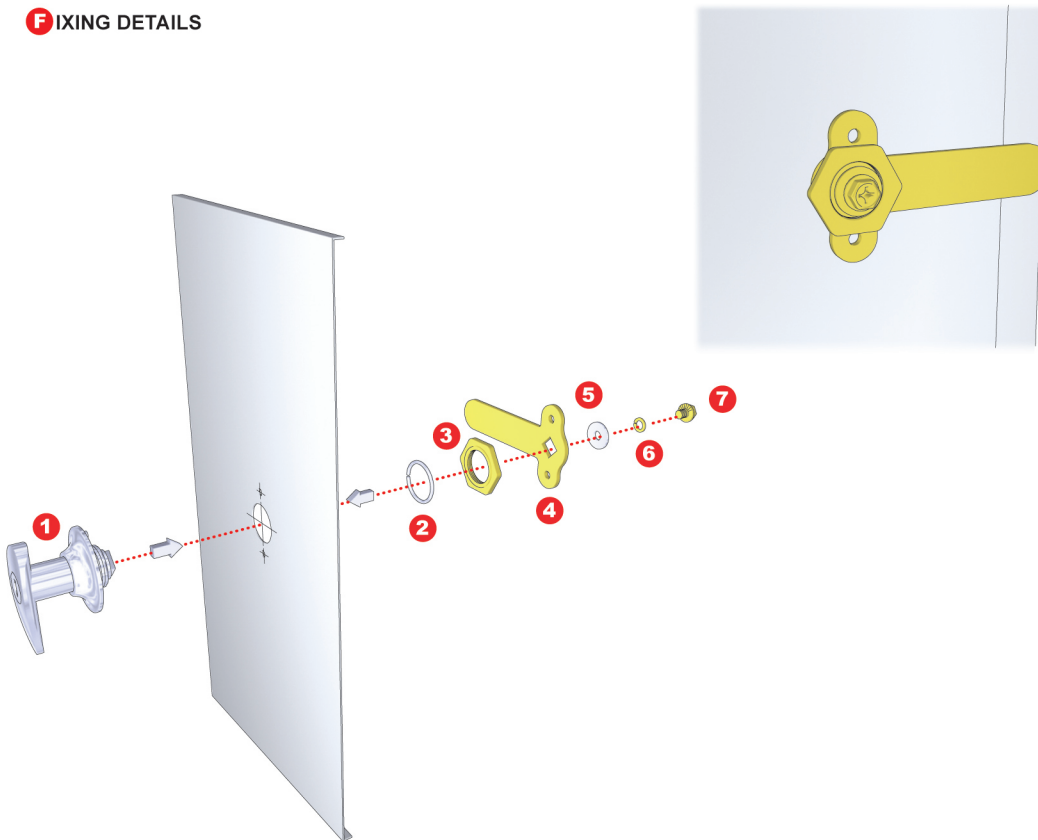
ELECTRICAL PANEL LOCKS



The Lock from Lock Experts



FIXING DETAILS





The Lock from Lock Experts

ELECTRICAL PANEL LOCKS



HANDLE LOCK



A-45

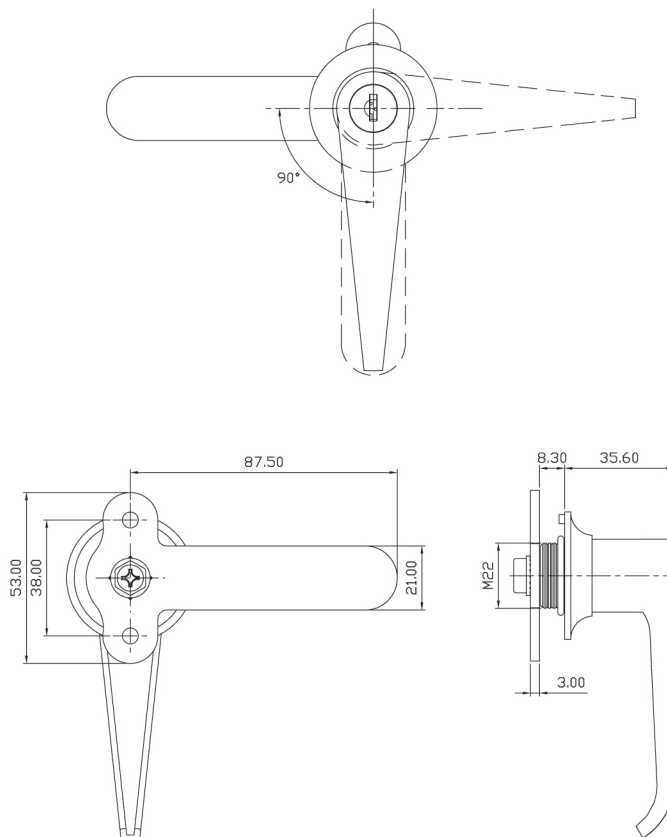
SPECIFICATIONS

- HANDLE LOCK
- CHROME FINISH
- ZINC ALLOY DIE CAST
- CAM TYPE G104
- NON-MASTER KEY SYSTEM
- NON-REMOVABLE CORE SYSTEM

SET INCLUDES

- 1 LOCK HOUSING
- 1 CYLINDER CORE
- 2 KEYS
- 1 TYPE G104 CAM
- 1 SUS 304 GRADE STAINLESS STEEL CLIP
- 1 SPCC GRADE STEEL SHUTTER
- 1 SCREW
- 1 HEXAGONAL NUT

DIMENSIONS



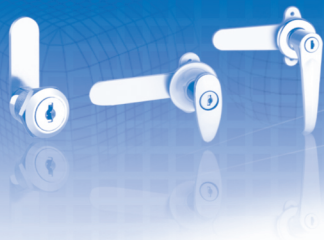
ORDERING DETAILS

MODEL

A-45

EXAMPLES:

A-45
HANDLE LOCK, CHROME FINISH, WITH CAM TYPE G104,
NON-MASTER KEY & NON-REMOVABLE CORE SYSTEM, UNCAPPED KEYS



ELECTRICAL PANEL LOCKS



The Lock from Lock Experts

HANDLE



B-45

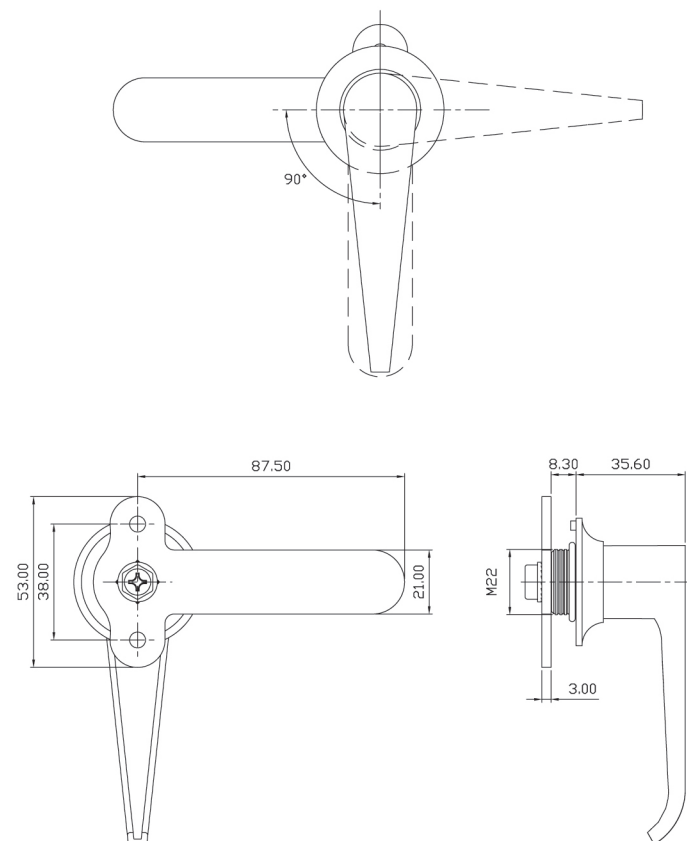
SPECIFICATIONS

- HANDLE
- CHROME FINISH
- ZINC ALLOY DIE CAST
- CAM TYPE G104
- NON-LOCKING

SET INCLUDES

- 1 HANDLE
- 1 TYPE G104 CAM
- 1 SCREW
- 1 HEXAGONAL NUT

DIMENSIONS



ORDERING DETAILS

MODEL

B-45

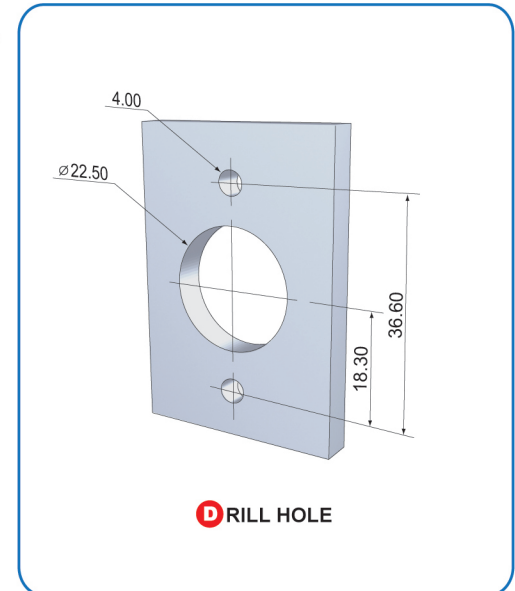
EXAMPLES:

B-45
HANDLE, CHROME FINISH, WITH CAM TYPE G104

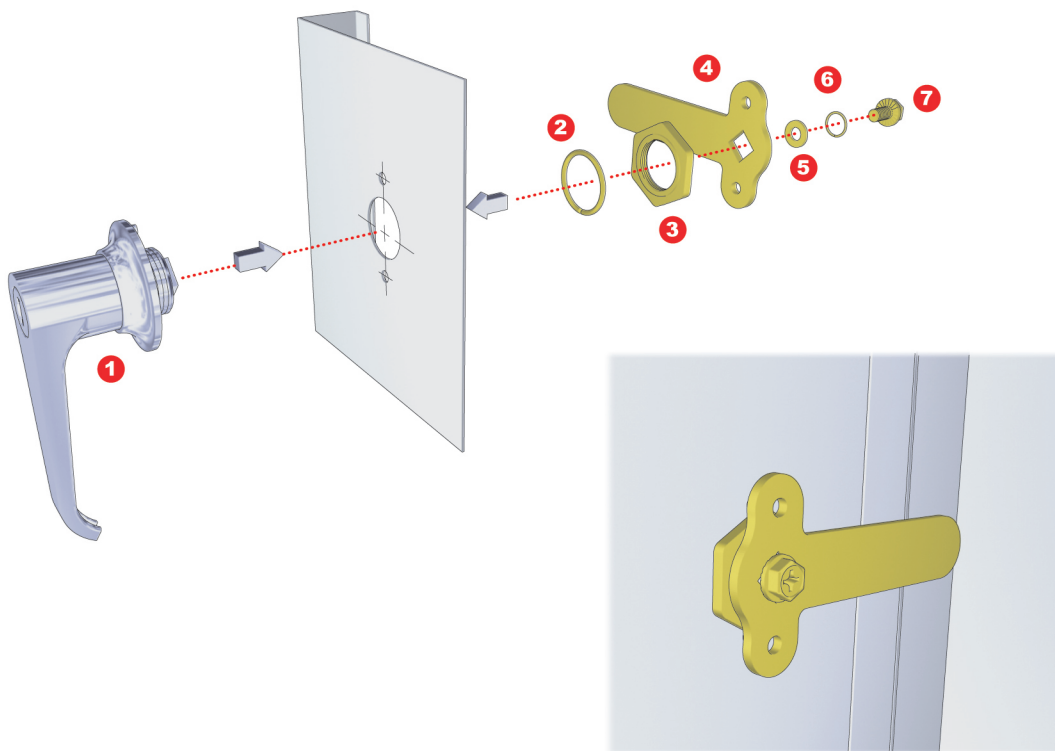


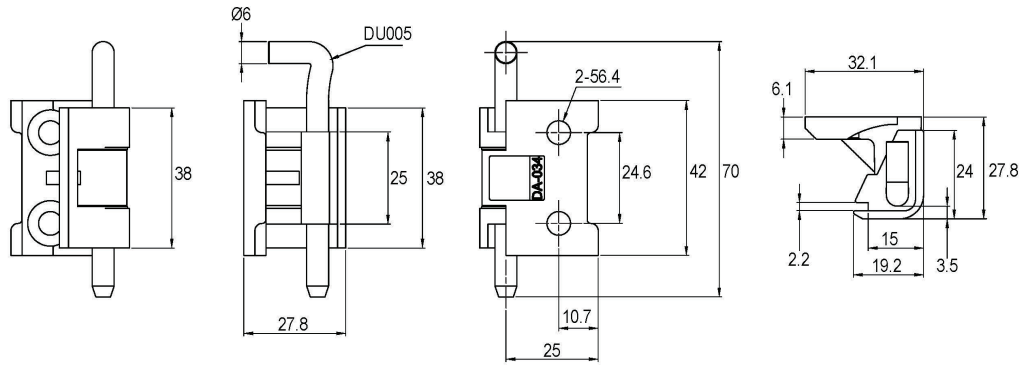
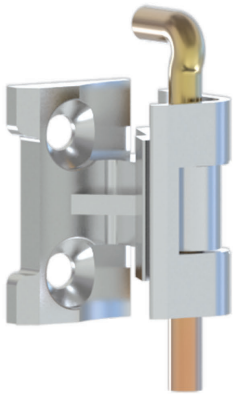
The Lock from Lock Experts

ELECTRICAL PANEL LOCKS



FIXING DETAILS





SPECIFICATIONS

- CONTROL BOX HINGE
(FOR DOOR THICKNESS OF 2mm OR LESS)
- ZINC ALLOY DIE CAST

A SET INCLUDES

- 1 HINGE
- 1 PIN

FN FINISH

- 03 CHROME
- 04 BLACK E.D.P.

PRODUCT CODE

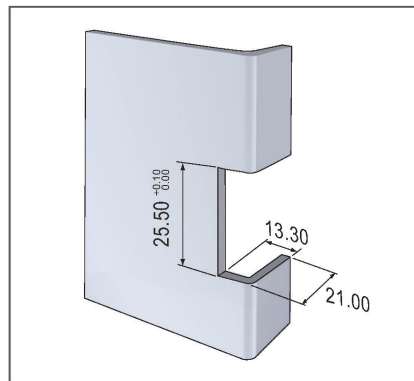
1-170-FN-DU005-16

ORDERING EXAMPLE & EXPLANATION

- 1-170-03-DU005-16

CONTROL BOX HINGE, CHROME FINISH.

FIXING HOLE SIZE



FIXING DETAILS

